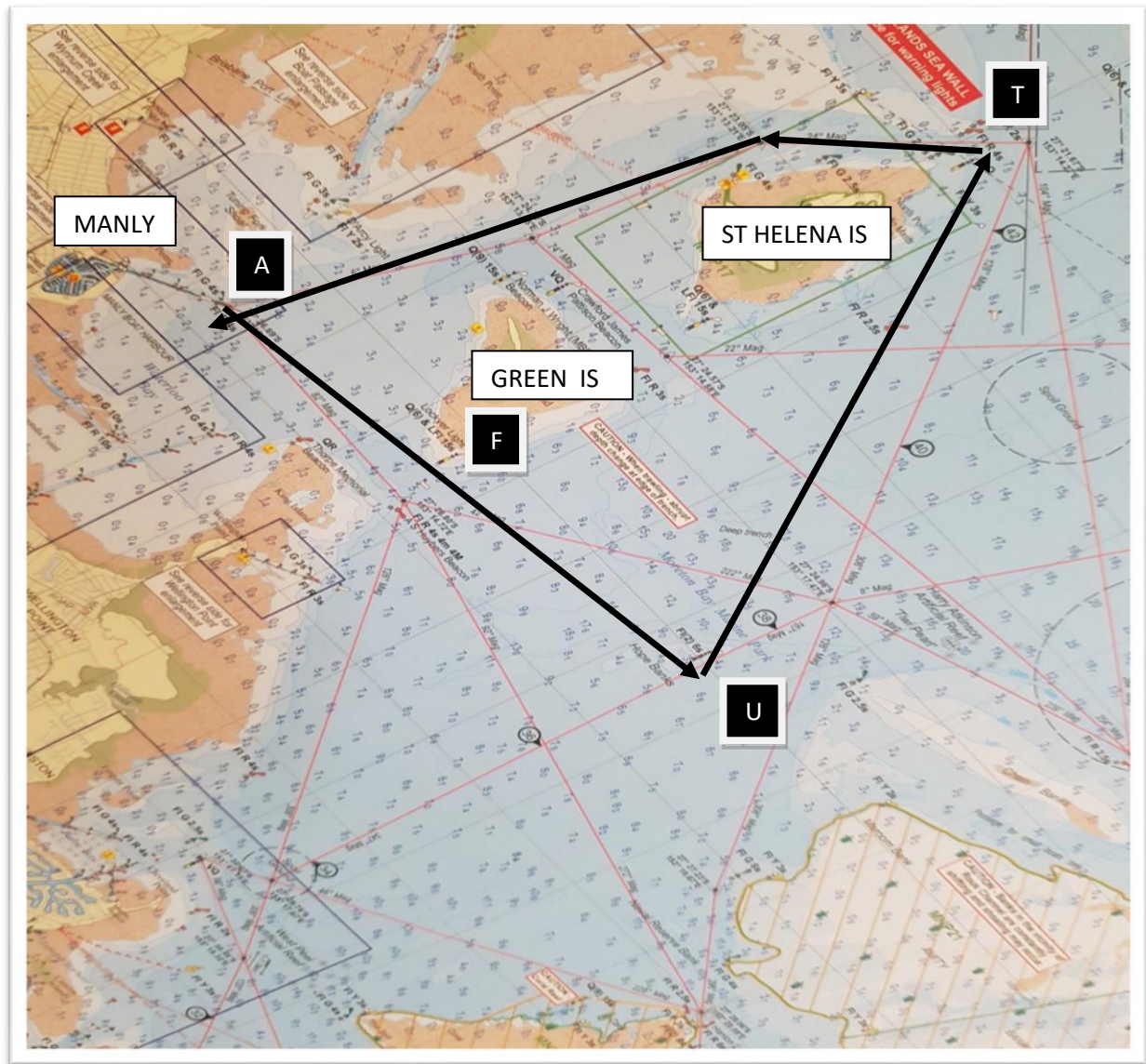
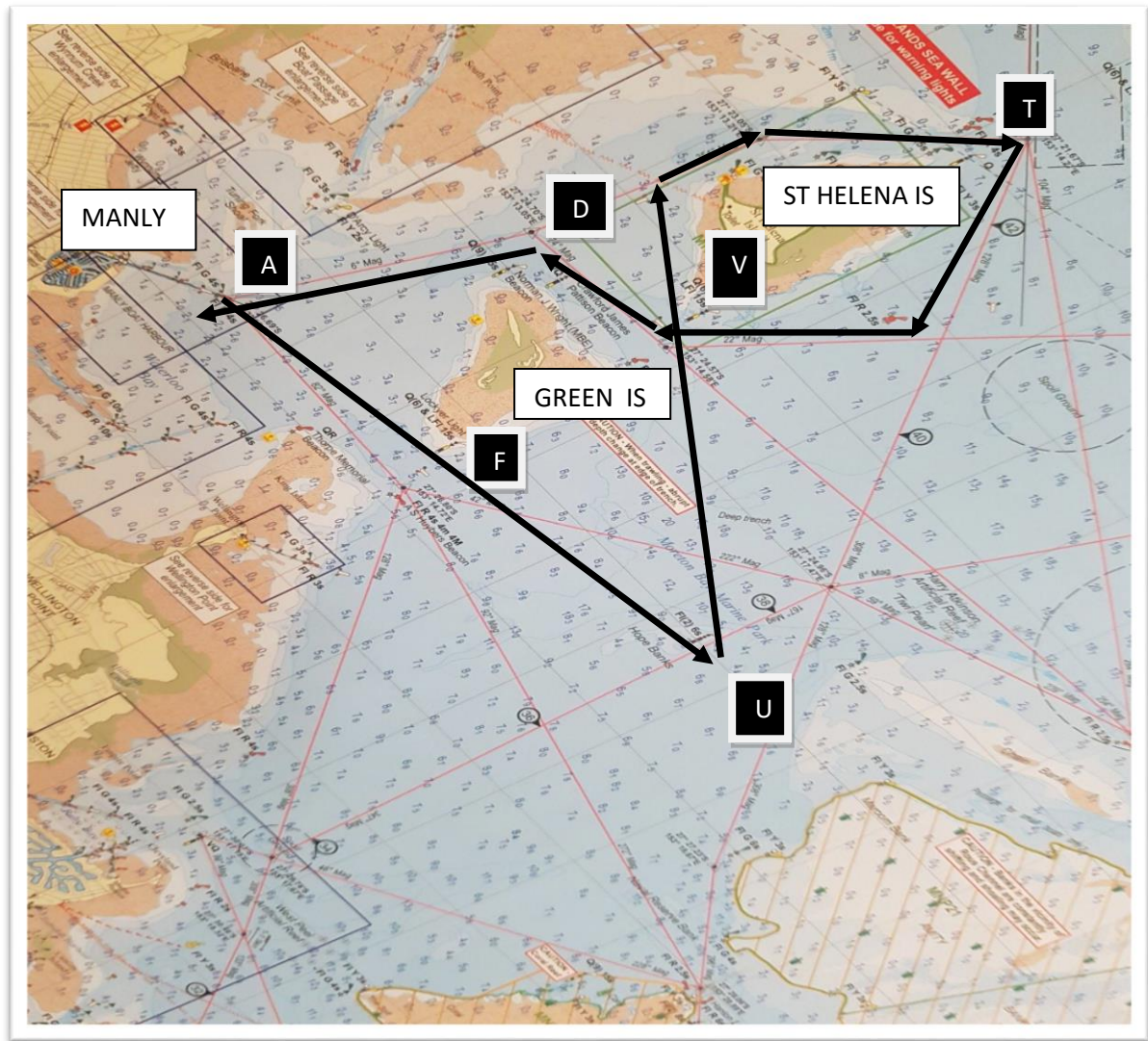


## TSCQ MANLY COURSE 1



<b>COURSE 1</b>	ONE LAP = 13.5 nm	
MARK	DESCRIPTION	LEAVE TO
START LINE A	OUTER RED BEACON EAST OF MANLY	PORT
F	LOCKYER LIGHT	PORT
U	HOPE BANKS BEACON	PORT
T	NORTH CARDINAL BEACON	PORT
FINISH LINE A	OUTER RED BEACON EAST OF MANLY	STARBOARD

## TSCQ MANLY COURSE 2



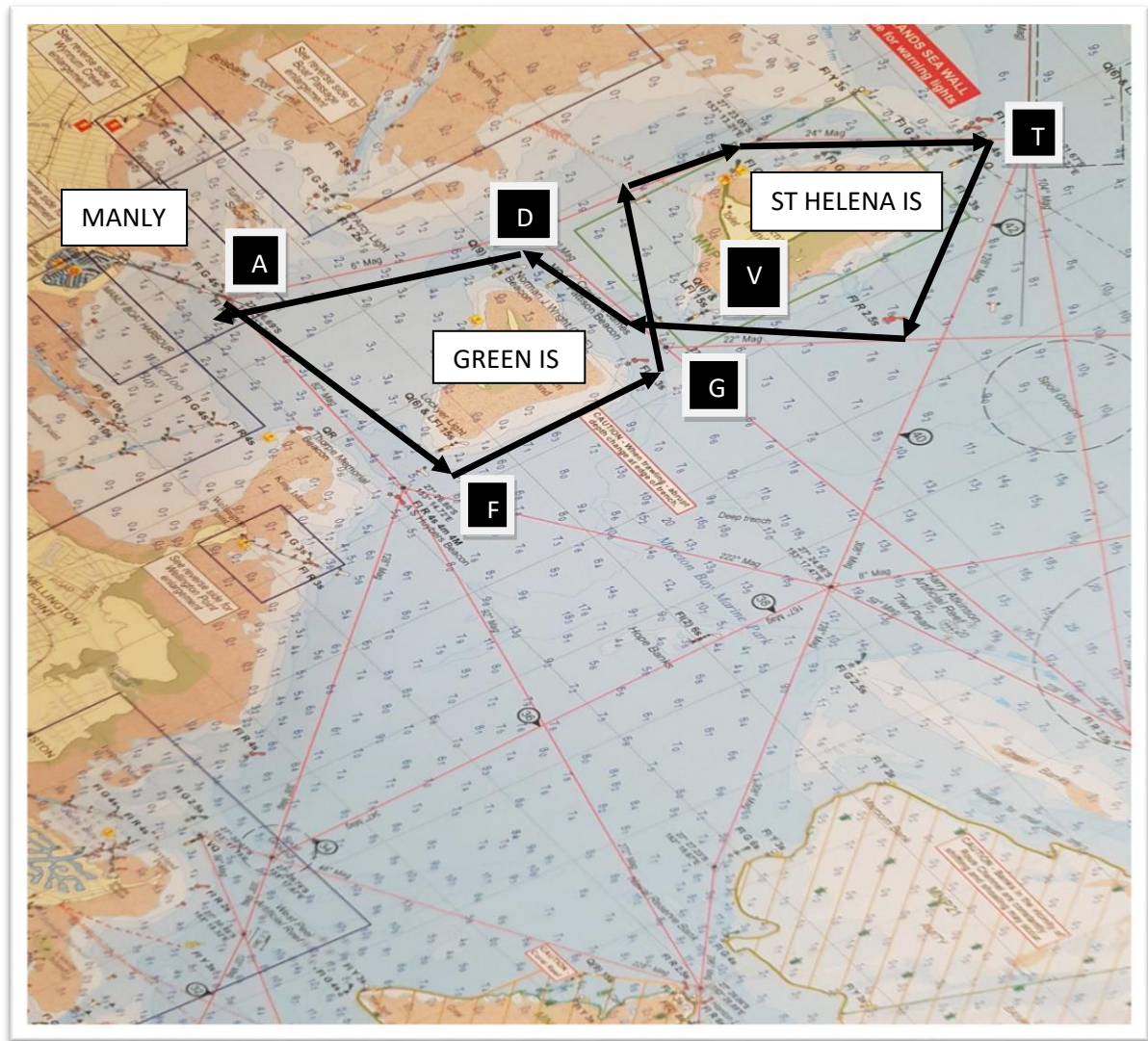
### COURSE 2

ONE LAP = 16 nm

MARK	DESCRIPTION	LEAVE TO
START LINE A	OUTER RED BEACON EAST OF MANLY	PORT
F	LOCKYER LIGHT	PORT
U	HOPE BANKS BEACON	PORT
V	SOUTH CARDINAL BEACON	STARBOARD
T	NORTH CARDINAL BEACON	STARBOARD
V	SOUTH CARDINAL BEACON	STARBOARD
D	WEST CARDINAL BEACON	PORT
FINISH LINE A	OUTER RED BEACON EAST OF MANLY	STARBOARD

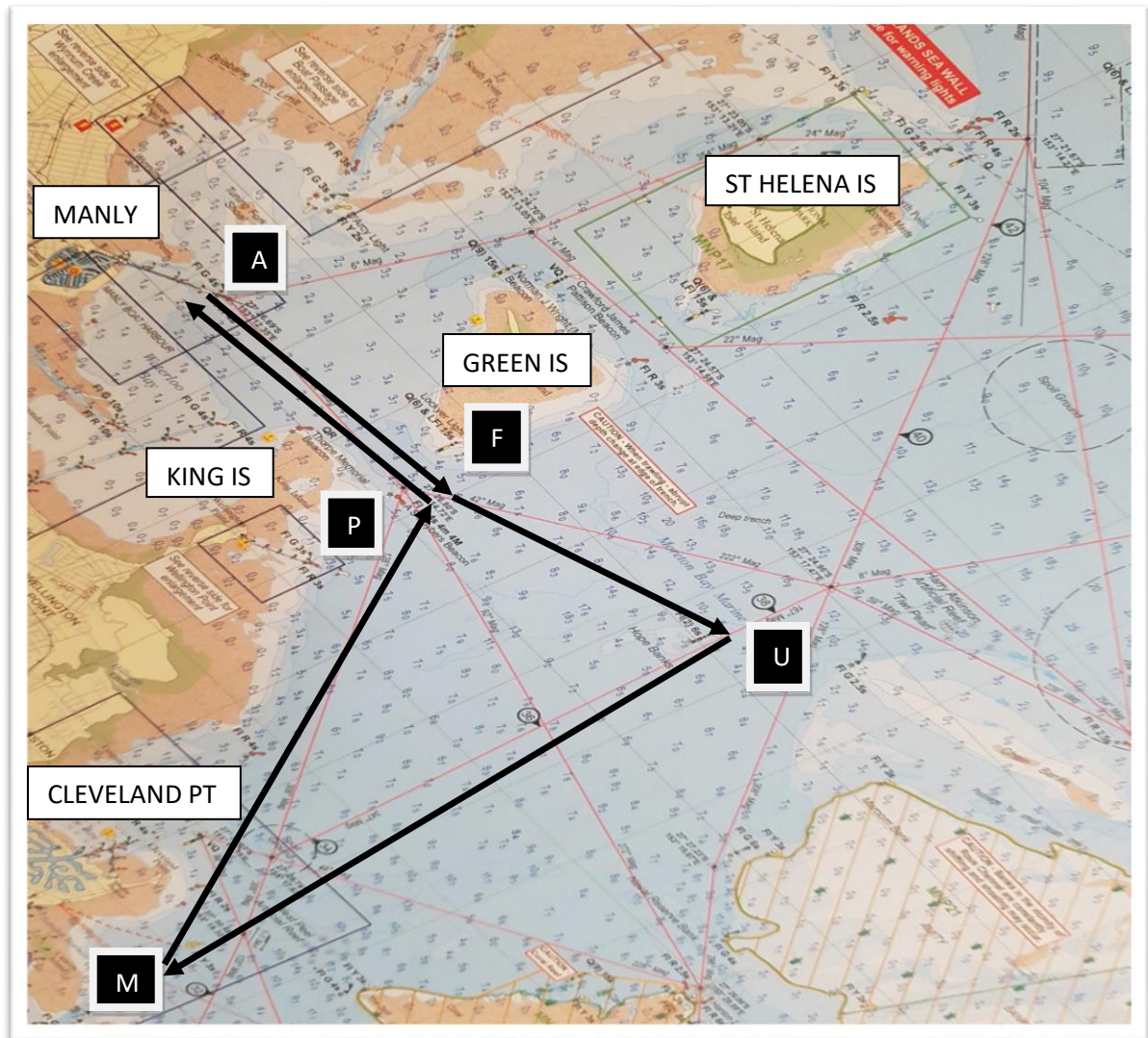


## TSCQ MANLY COURSE 3



<b>COURSE 3</b>	ONE LAP = 12 nm	
MARK	DESCRIPTION	LEAVE TO
START LINE A	OUTER RED BEACON EAST OF MANLY	PORT
F	LOCKYER LIGHT	PORT
G	RED BEACON NORTH-EAST OF GREEN IS	PORT
V	SOUTH CARDINAL BEACON	STARBOARD
T	NORTH CARDINAL BEACON	STARBOARD
V	SOUTH CARDINAL BEACON	STARBOARD
D	WEST CARDINAL BEACON	PORT
FINISH LINE A	OUTER RED BEACON EAST OF MANLY	STARBOARD

## TSCQ MANLY COURSE 4



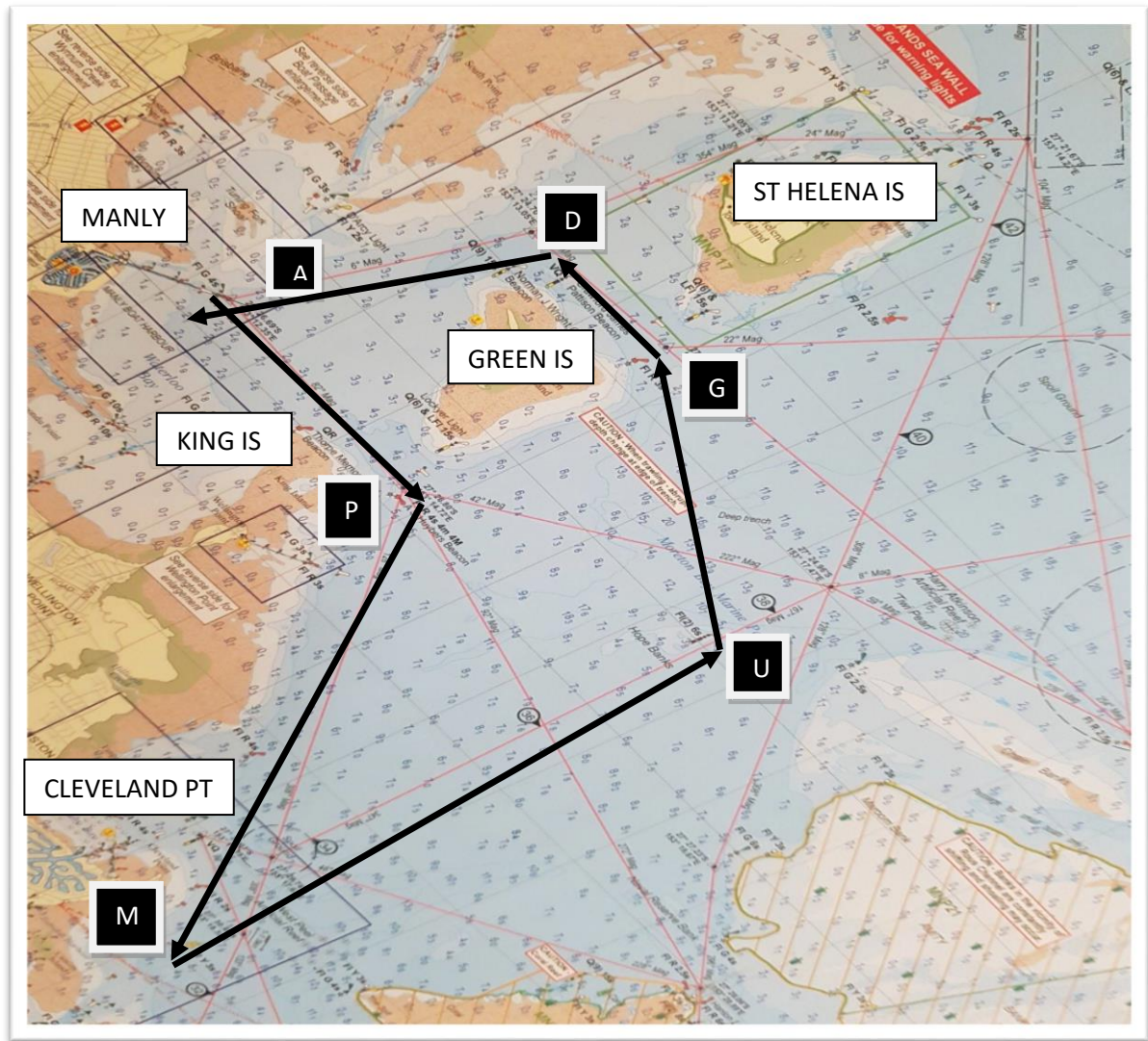
### COURSE 4

ONE LAP = 16.5 nm

MARK	DESCRIPTION	LEAVE TO
START LINE A	OUTER RED BEACON EAST OF MANLY	PORT
F	LOCKYER LIGHT	PORT
U	HOPE BANKS BEACON	STARBOARD
M	YELLOW BUOY SOUTH-EAST OF CLEVELAND PT	STARBOARD
P	HYBERS RED BEACON NORTH-EAST OF KING IS	PORT
FINISH LINE A	OUTER RED BEACON EAST OF MANLY	STARBOARD



## TSCQ MANLY COURSE 5



<b>COURSE 5</b>	ONE LAP = 16 nm	
MARK	DESCRIPTION	LEAVE TO
START LINE A	OUTER RED BEACON EAST OF MANLY	PORT
P	HYBERS RED BEACON NORTH-EAST OF KING IS	STARBOARD
M	YELLOW BUOY SOUTH-EAST OF CLEVELAND PT	PORT
U	HOPE BANKS BEACON	PORT
G	RED BEACON NORTH-EAST OF GREEN IS	PORT
D	WEST CARDINAL BEACON	PORT
FINISH LINE A	OUTER RED BEACON EAST OF MANLY	STARBOARD