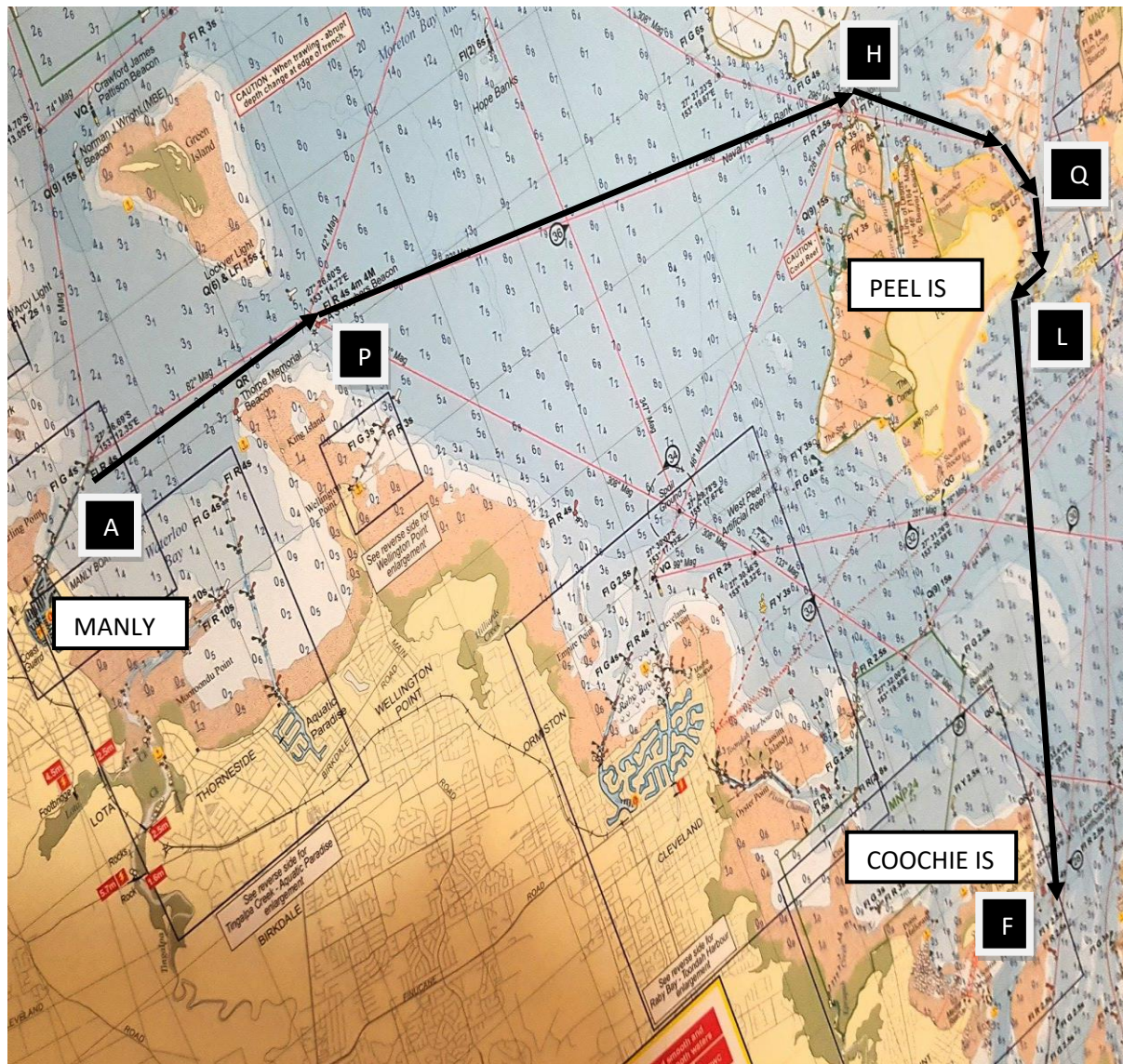


## TSCQ MANLY TO COOCHIE-MUDLO ISLAND COURSE 1



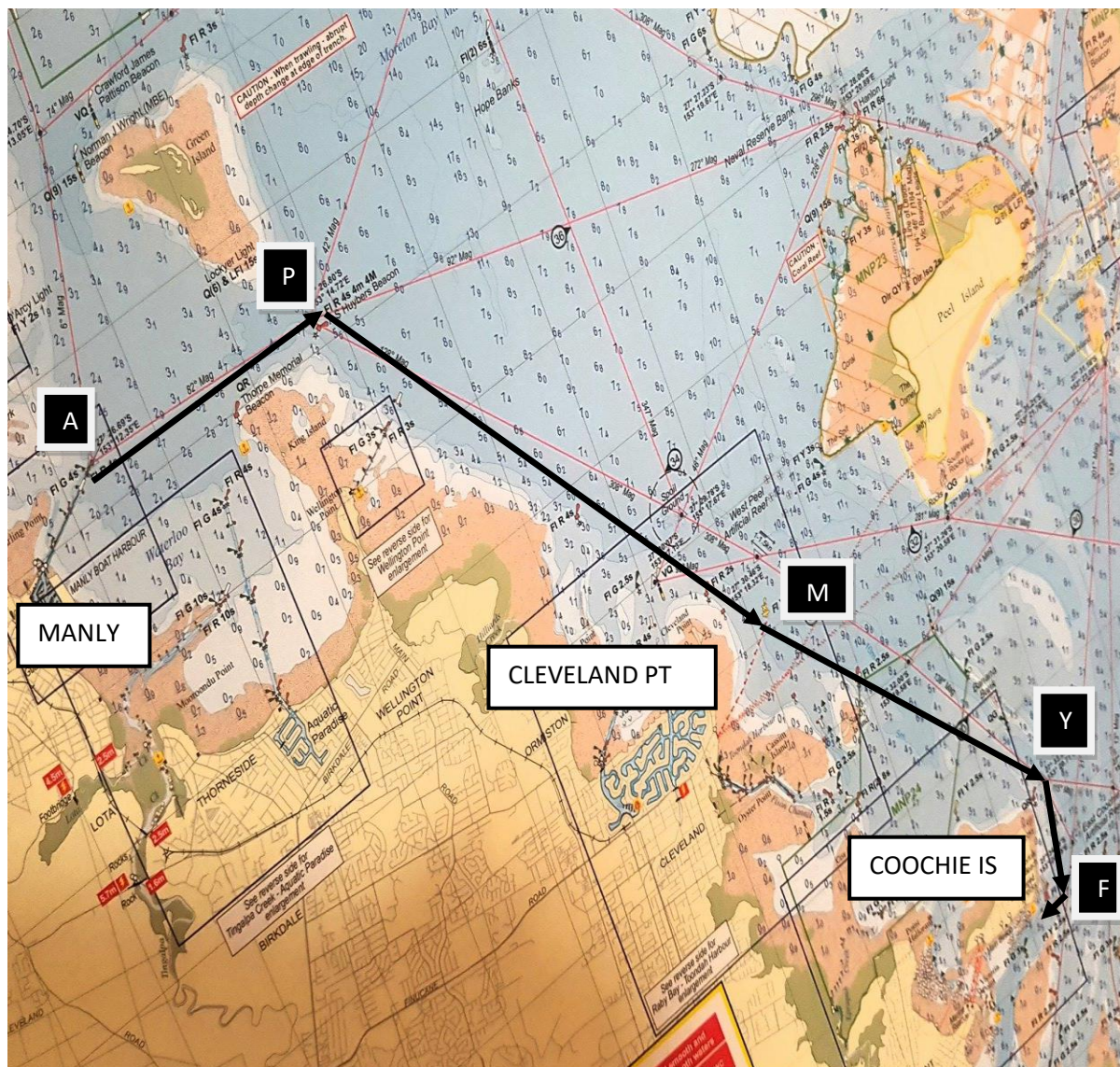
### COURSE 1

ONE LAP = 19.8 nm

MARK	DESCRIPTION	LEAVE TO
START LINE A	OUTER RED BEACON EAST OF MANLY	PORT
P	HYBERS RED BEACON	STARBOARD
H	HANLON LIGHT	STARBOARD
Q	DOUGLAS LIGHT	PORT
L	YELLOW BUOY EAST OF PEEL IS	PORT
FINISH LINE F	RED BUOY SOUTH-EAST OF COOCHIE IS	STARBOARD



## TSCQ MANLY TO COOCHIE-MUDLO ISLAND COURSE 2



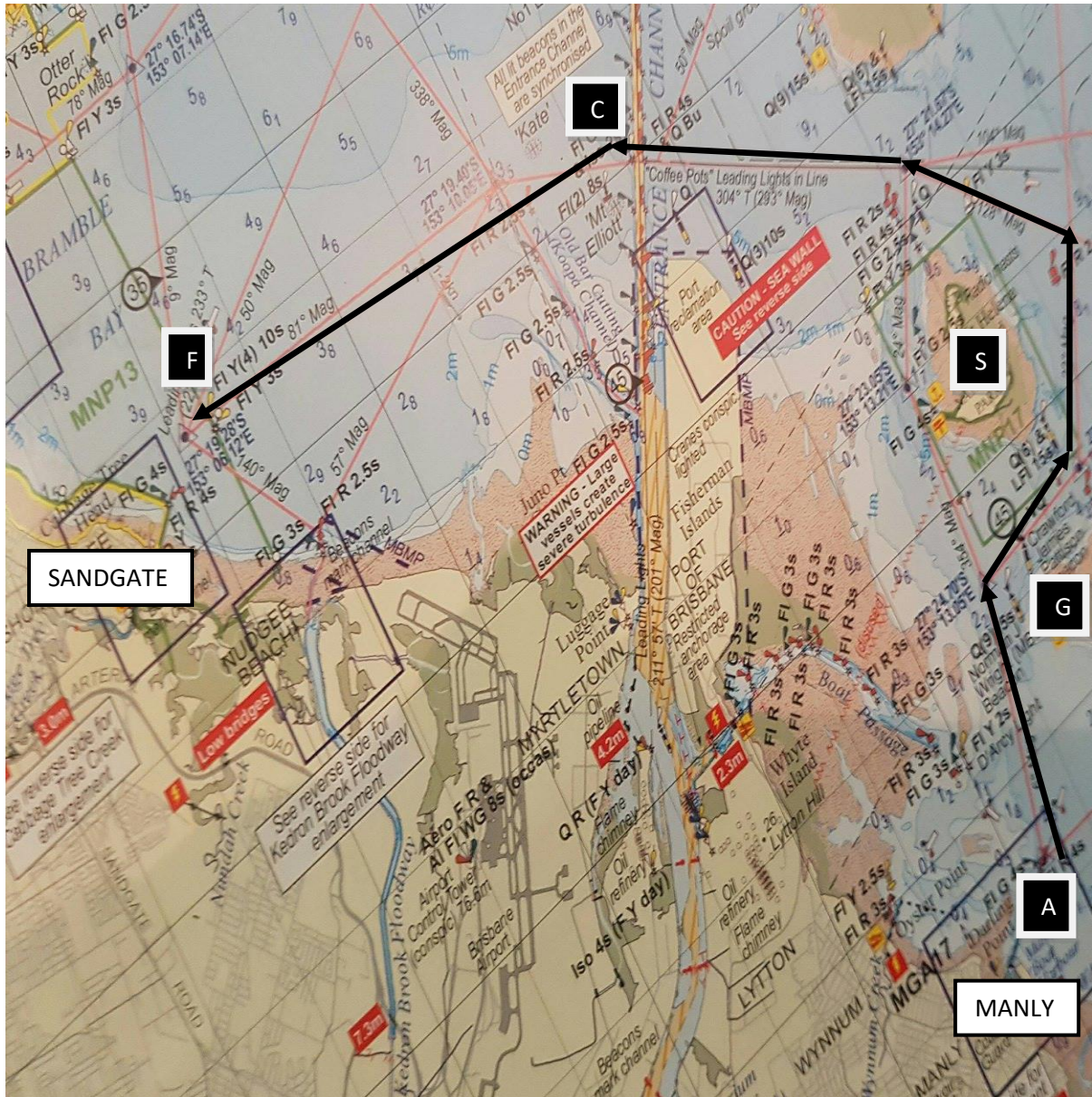
### COURSE 2

ONE LAP = 11.9 nm

MARK	DESCRIPTION	LEAVE TO
START LINE A	OUTER RED BEACON EAST OF MANLY	PORT
P	HYBERS RED BEACON	STARBOARD
M	YELLOW BUOY SOUTH-EAST OF CLEVELAND PT	PORT
Y	GREEN BEACON SOUTH-WEST OF BANANA BK	PORT
FINISH LINE F	RED BUOY SOUTH-EAST OF COOCHIE IS	STARBOARD



## TSCQ MANLY TO SANDGATE COURSE 1

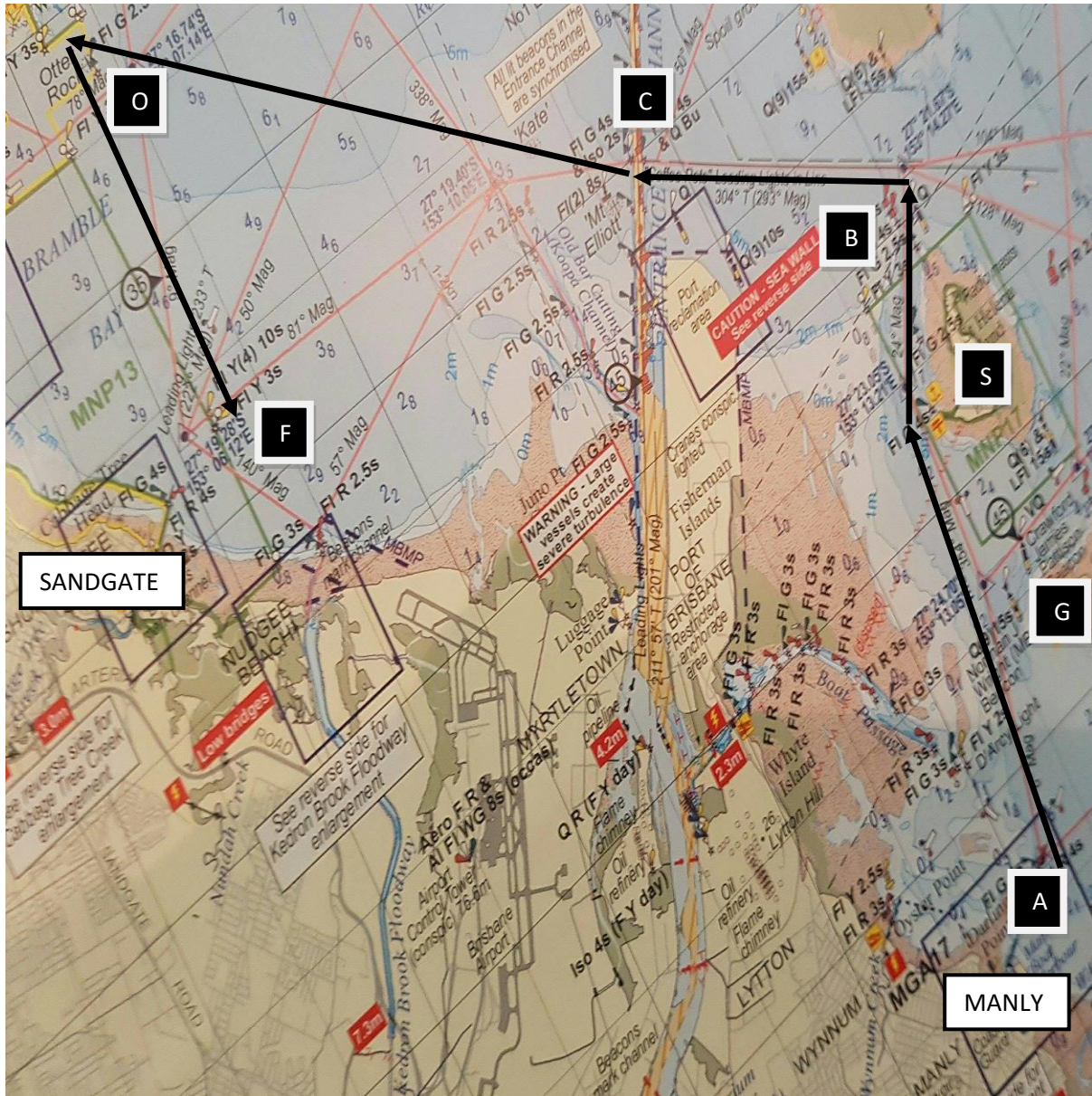


**COURSE 1**                      ONE LAP = 13.8 nm

MARK	DESCRIPTION	LEAVE TO
START LINE A	OUTER RED BEACON EAST OF MANLY	PORT
G	GREEN ISLAND	STARBOARD
S	ST HELENA ISLAND	PORT
C	COFFEE POTS	PORT
FINISH LINE F	FISHERIES BEACON EAST OF SANDGATE	PORT



## TSCQ MANLY TO SANDGATE COURSE 2



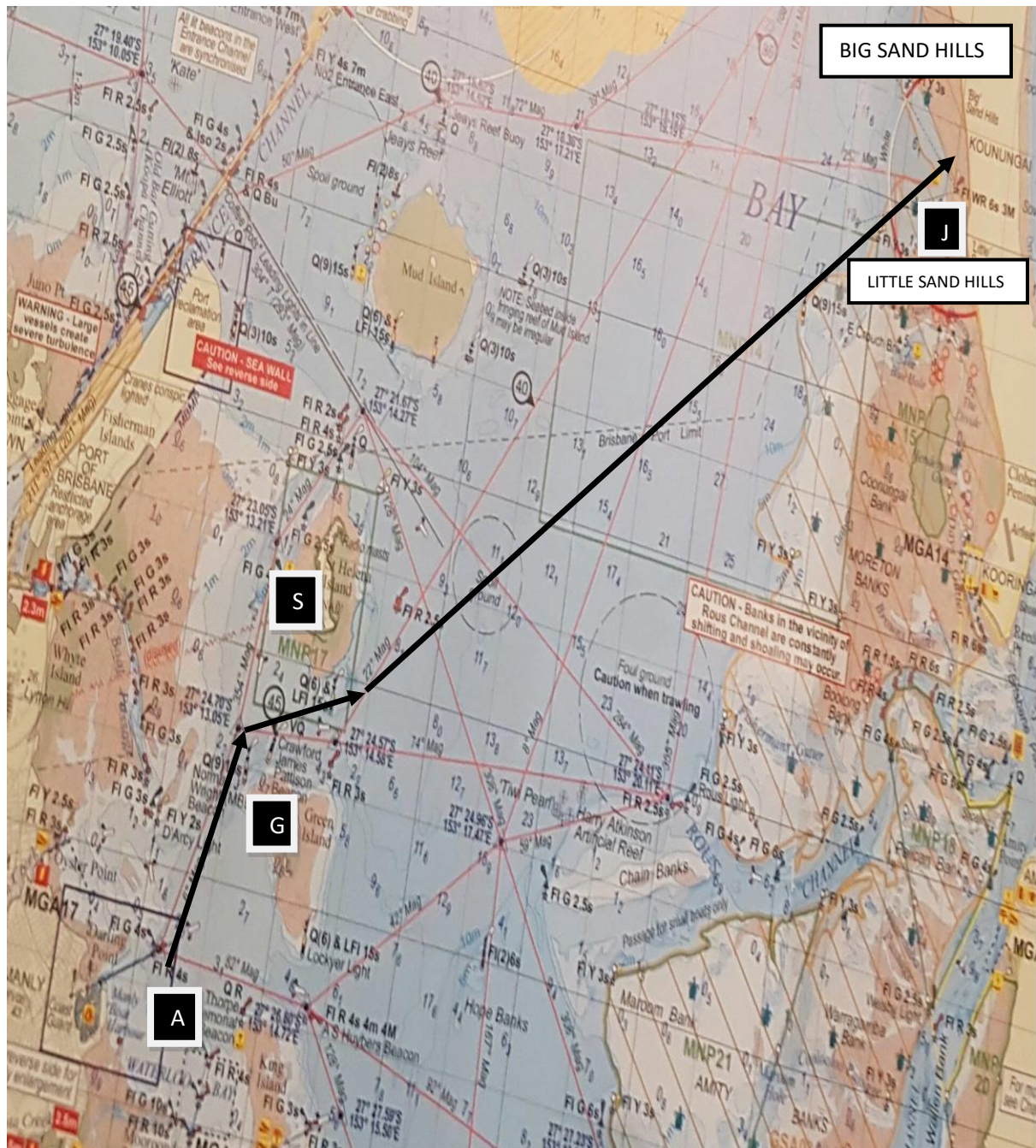
### COURSE 2

ONE LAP = 16.2 nm

MARK	DESCRIPTION	LEAVE TO
START LINE A	OUTER RED BEACON EAST OF MANLY	PORT
G	GREEN ISLAND	STARBOARD
S	ST HELENA ISLAND	STARBOARD
B	RED BEACONS NORTH OF ST HELENA ISLAND	PORT
C	COFFEE POTS	STARBOARD
O	GREEN BEACON AT OTTER ROCK	PORT
FINISH LINE F	FISHERIES BEACON EAST OF SANDGATE	STARBOARD



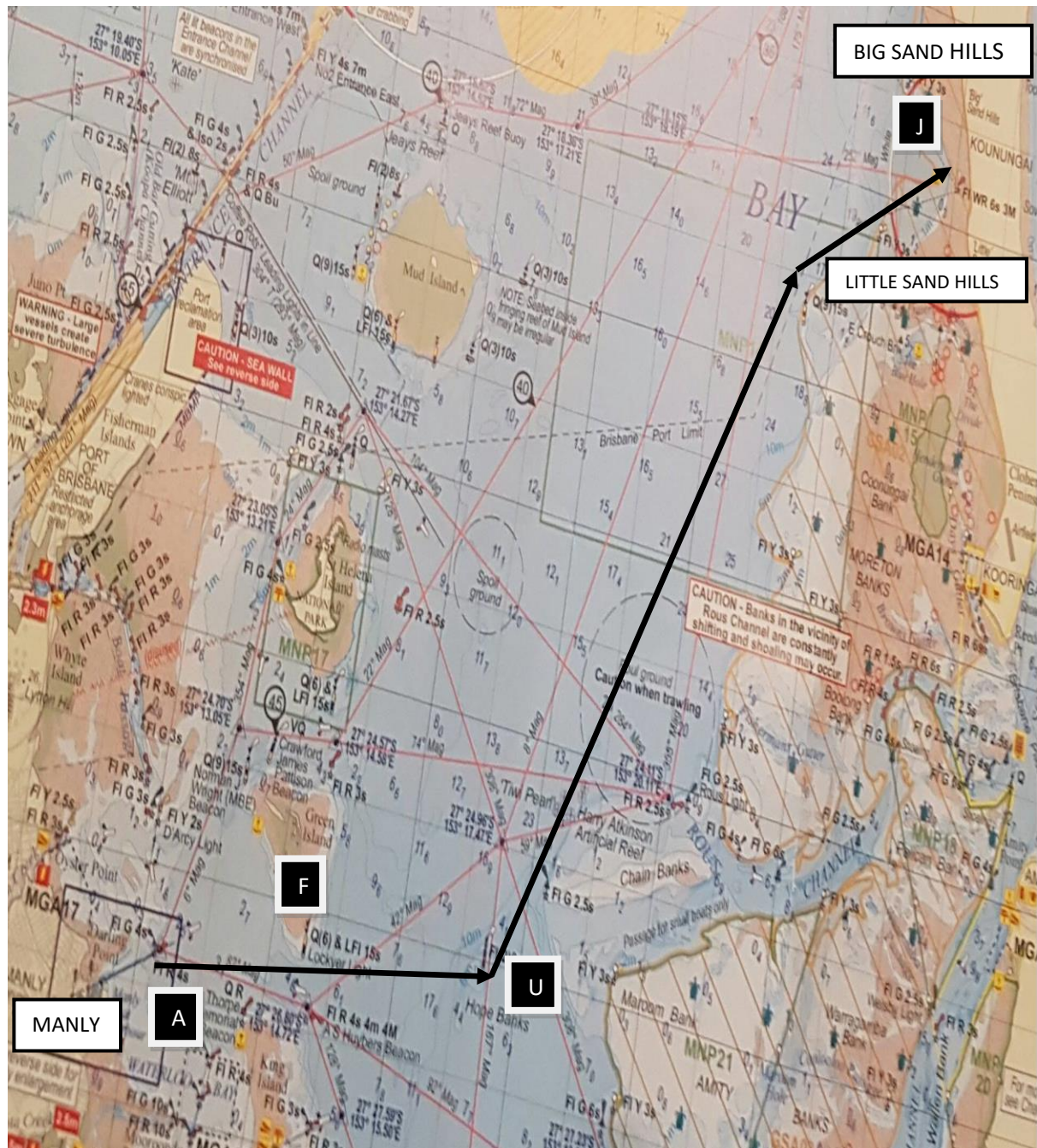
## TSCQ MANLY TO SAND HILLS COURSE 1



<b>COURSE 1</b>	ONE LAP = 14.1 nm	
<b>MARK</b>	<b>DESCRIPTION</b>	<b>LEAVE TO</b>
START LINE A	OUTER RED BEACON EAST OF MANLY	PORT
G	GREEN ISLAND	STARBOARD
S	ST HELENA ISLAND	PORT
FINISH LINE J	RED BEACON SOUTH OF BIG SAND HILLS	STARBOARD



## TSCQ MANLY TO SAND HILLS COURSE 2



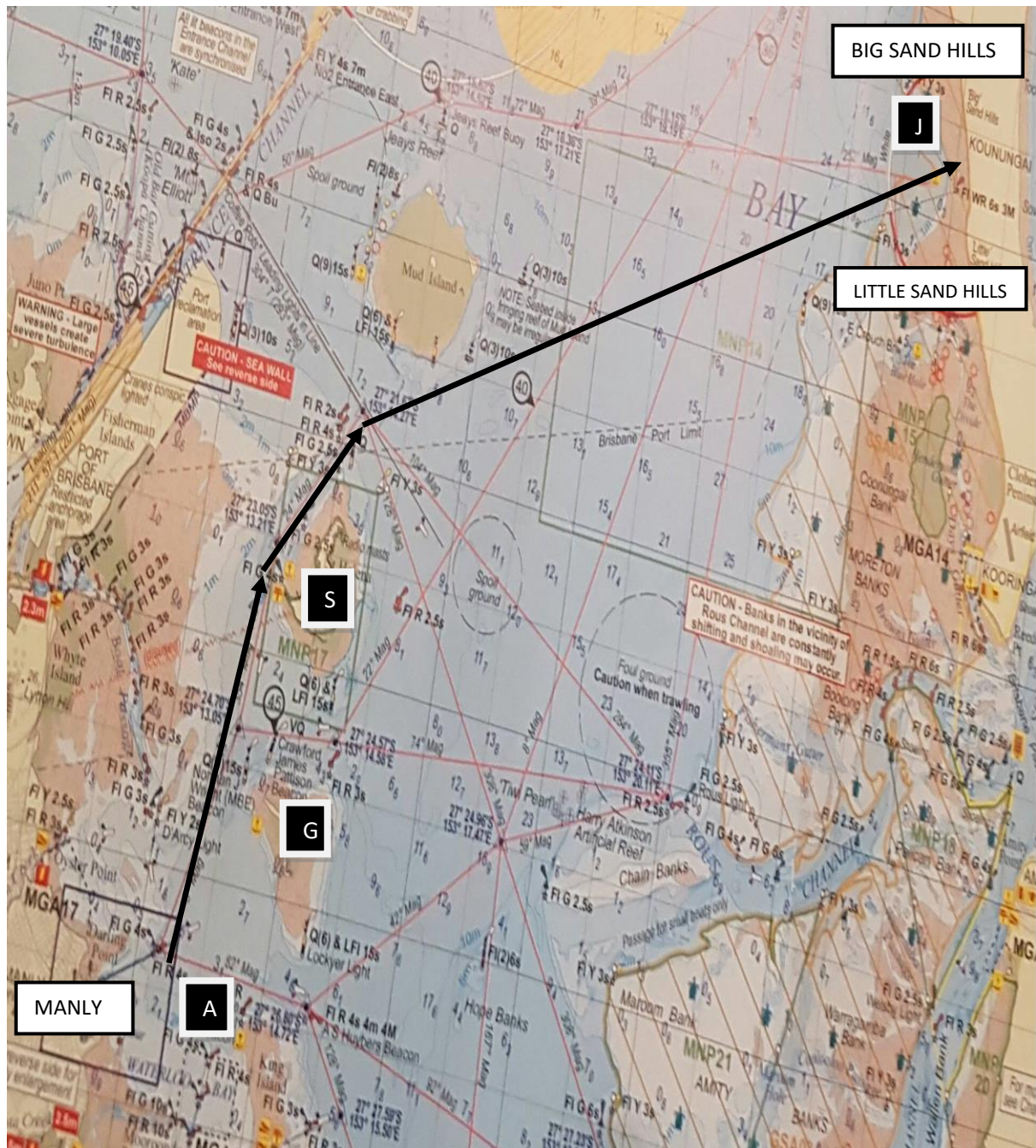
### COURSE 2

ONE LAP = 15.1 nm

MARK	DESCRIPTION	LEAVE TO
START LINE A	OUTER RED BEACON EAST OF MANLY	PORT
F	LOCKYER LIGHT	PORT
U	HOPES BANKS BEACON	PORT
FINISH LINE J	RED BEACON SOUTH OF BIG SAND HILLS	STARBOARD



## TSCQ MANLY TO SAND HILLS COURSE 3



### COURSE 3

ONE LAP = 14.9 nm

### MARK

### DESCRIPTION

### LEAVE TO

START LINE A

OUTER RED BEACON EAST OF MANLY

PORT

G

GREEN ISLAND

STARBOARD

S

ST HELENA ISLAND

STARBOARD

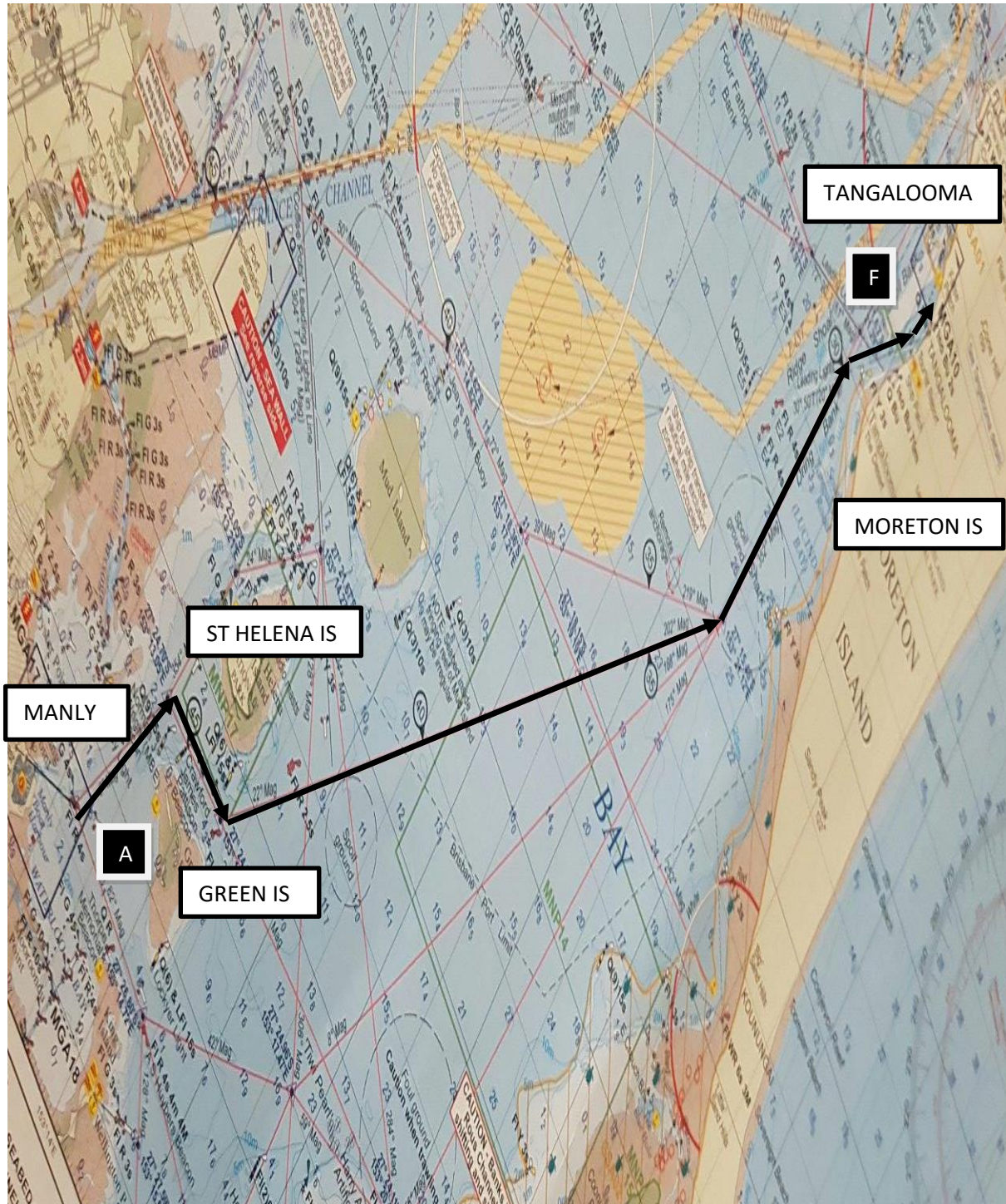
FINISH LINE J

RED BEACON SOUTH OF BIG SANDHILLS

STARBOARD



## TSCQ MANLY TO TANGALOOMA COURSE



<b>COURSE</b>	ONE LAP = 19.3 nm	
<b>MARK</b>	<b>DESCRIPTION</b>	<b>LEAVE TO</b>
START LINE A	OUTER RED BEACON EAST OF MANLY	PORT
FINISH LINE F	100 m FROM END OF JETTY IN LINE WITH JETTY	STARBOARD

NOTE – Arrows show a suggested course only. Skippers may take any course as long as the Start and Finish marks and all navigation marks are observed.